

PT SERIES SIZE GUIDE (T SERIES TRIMMER SHOWN)



PT SERIES CUT LENGTH

7 MODEL SIZES TO CHOOSE FROM	UP TO 1/16in CUT CAPACITY PT650 - PT1850	2 SPEED VARIANTS TO CHOOSE FROM	 FREE MATERIAL COMPATIBILITY SERVICE
---	--	--	---

PT SERIES MATERIALS CUT GUIDE

- | | | | |
|--|--|------------------------------------|--|
| Aluminium ⁵ / ₆₄ " | Foil | Photocopier Paper | Our trimmers will cut most flexible materials up to the cut capacity. If you have a specific requirement and are not sure, please use our Free Material Compatibility Service: uksales@rotatrim.co.uk |
| Canvas | Hardboard ⁵ / ₆₄ " | Photo Film | |
| Card | Heatseal | Polyester | |
| Cellophane | Honeycomb | Polystyrene | |
| Cibachrome | Inkjet Paper | PVC ¹ / ₃₂ " | |
| Cork | Kraft Paper | Shim Metal | |
| Corrugated Card | Laminate | Tissue Paper | |
| Crepe Paper | Leather | Veneers | |
| Felt | Masonite ⁵ / ₆₄ " | Vinyl | |
| Film | MDF ⁵ / ₆₄ " | | |
| | Mountboard | | |

Rotatrim was formed in 1966 with a vision to create the finest rotary trimmer ever; a philosophy and a passion that continues to this present day. Using only the finest quality materials and precision engineered components, each trimmer is hand assembled by skilled technicians to exact tolerances, to construct a precise, exceptionally reliable, ultra durable trimmer. Each machine goes through a process of stringent quality checks at manufacture and assembly to ensure you receive what you have come to expect... the world's finest rotary cutting equipment.

We want to ensure you select the correct product for your needs. Should you have any questions or require further information, please contact Foster on 800-523-4855 or visit www.go-foster.com



Authorised Distributor for Rotatrim:

Foster

204 B Progress Drive, Montgomeryville, PA 18936
Toll Free: 800-523-4855 Phone: 267-413-6220 Fax: 267-413 6227 www.go-foster.com



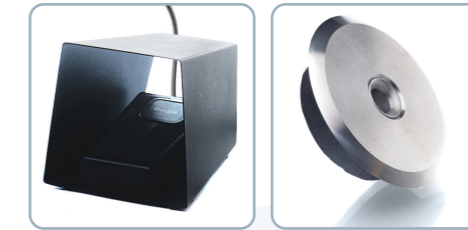
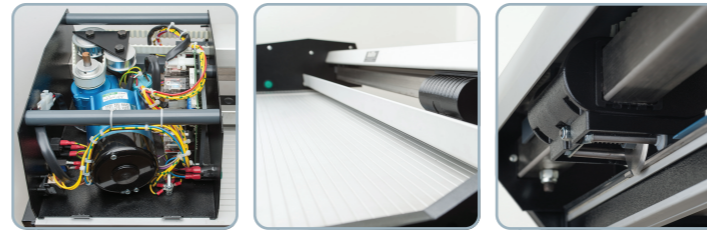
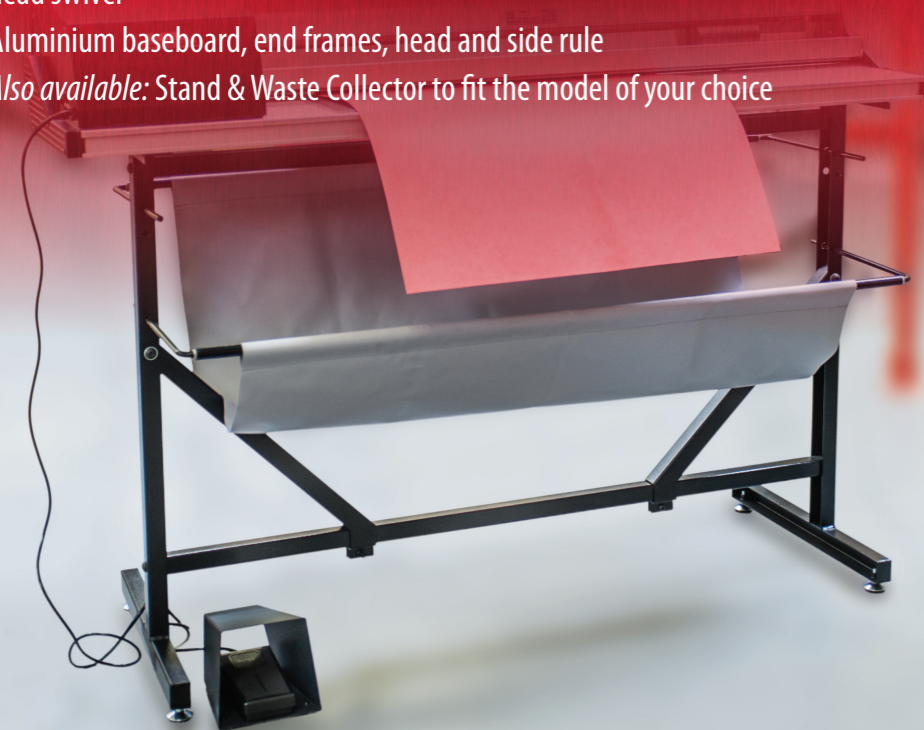
PowerTech
PT SERIES

Cutting edge technology. Minimum effort.

Designed & Manufactured in the United Kingdom by Rotatrim
ISO 9001-Quality Assured

PowerTech PT SERIES

- Power driven large format, precision, robust trimmer
- Optional high speed and normal speed variants
- Foot pedal operation with automatic safety clamp enables a single user to easily position and cut large materials
- Cuts a wide range of materials without adjustment
- Overload protection feature
- Range of cutting lengths from 2ft 2in up to 8ft 4in
- Ultra hard Sheffield D2 'Tool Steel' self-sharpening, precision engineered blades
- Large single square stainless steel guide rail completely eliminates head swivel
- Aluminium baseboard, end frames, head and side rule
- Also available: Stand & Waste Collector to fit the model of your choice



Rotatrim
The world's finest rotary cutting equipment since 1966



Machine Speed Options

The *PowerTech PT Series* is available in both normal speed and high speed variants. The normal speed variant cuts at 1.968ft/sec and has more torque so is better for trimming heavier materials. The high speed version cuts at 3.28ft/sec and is better where lighter materials (generally up to 3/64") in thickness are being cut. On the high speed machine, it is also possible to remove the RCC plate (as it is used for thinner materials), to allow for a cut to be performed in both directions.

A range of accessories can be purchased separately including Extended Rule Kits; Roll Dispenser; Stand & Waste Collector. Visit www.rotatrim.com for details.

BRITISH MADE PRECISION ENGINEERING

Model	Cut Length		Paper Size Landscape	Overall Length		Cut Capacity		Weight	
	mm	in		mm	in	mm	in	kg	lb
PT650	650	26	A2	1395	55	3.0	0.157	48.7	107.2
PT950	950	38	A1	1695	67	3.0	0.157	51.7	113.6
PT1250	1250	49	A0	1995	78½	3.0	0.157	54.7	120.3
PT1550	1550	61	A0+	2295	90½	3.0	0.157	57.7	126.8
PT1850	1850	73	2A0	2595	102	3.0	0.157	60.7	133.5
PT2150	2150	85	2A0+	2895	114	2.0	0.079	63.7	140.1
PT2500	2550	100	4A0	3245	128	1.5	0.059	67.2	147.7

All PowerTech machines come complete with foot pedal, line voltage power cable, spare cutting wheel.