

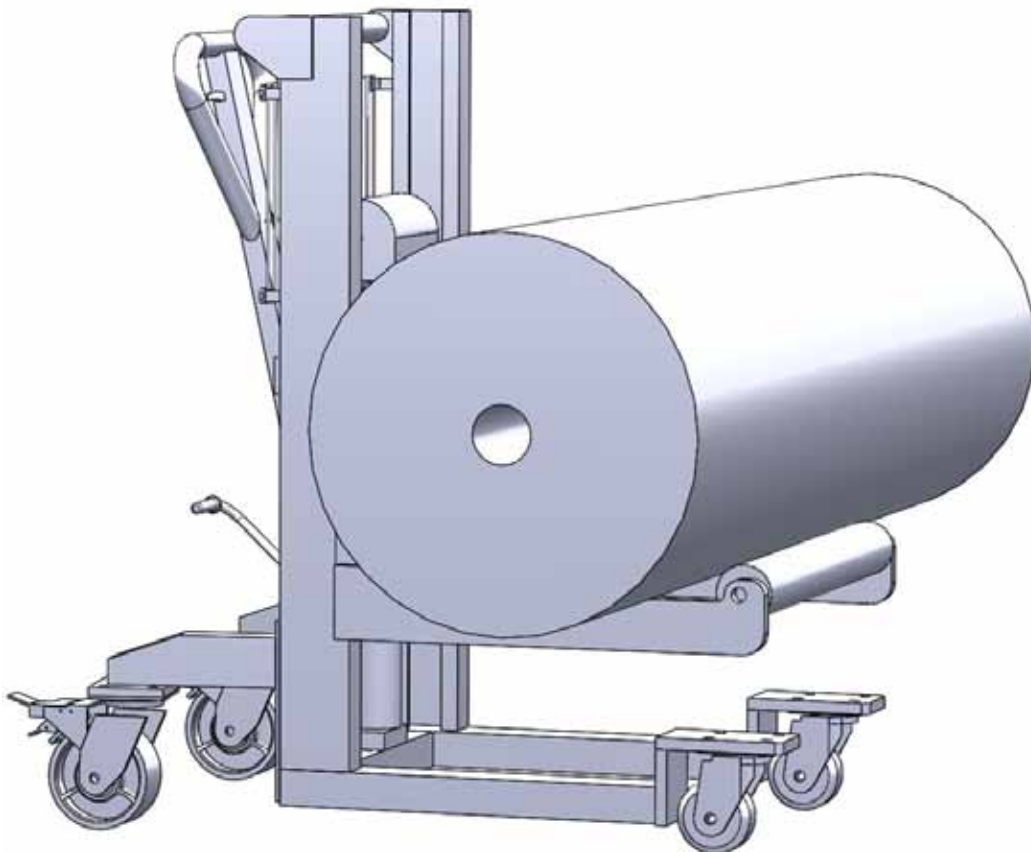
# ***Foster***

## **On-A-Roll Lifter®**

### **Service Guide for Spinner Models**

**This guide provides information on some common problems that may occur and steps to resolve them.**

It is the user's responsibility to exercise good judgment, common sense, safety measures and reasonable limits regarding the use of the On-A-Roll Lifter® so as not to incur risk to the user or damage to the materials being carried. In order to obtain maximum benefit from your machine, please read these instructions carefully before using the On-A-Roll Lifter®.



# Contents

---

- 1. Parts Diagram**
  - 1.1 Complete Parts Diagram**
  - 1.2 Chain and Fork Assembly**
  - 1.3 Hydraulic Pump Assembly**
- 2. On-A-Roll Lifter® Wheels Not Turning Properly**
- 3. Oil Leaking**
- 4. Roll Not Lifting**
- 5. Tray Sinks Down Slowly**
- 6. Inspecting Hydraulic Cylinder for Leaks**
- 7. On-A-Roll Lifter® Lift Pump Repair**
- 8. Hydraulic Pump Replacement**

# Parts Diagram

## 1 Parts diagram and list of components

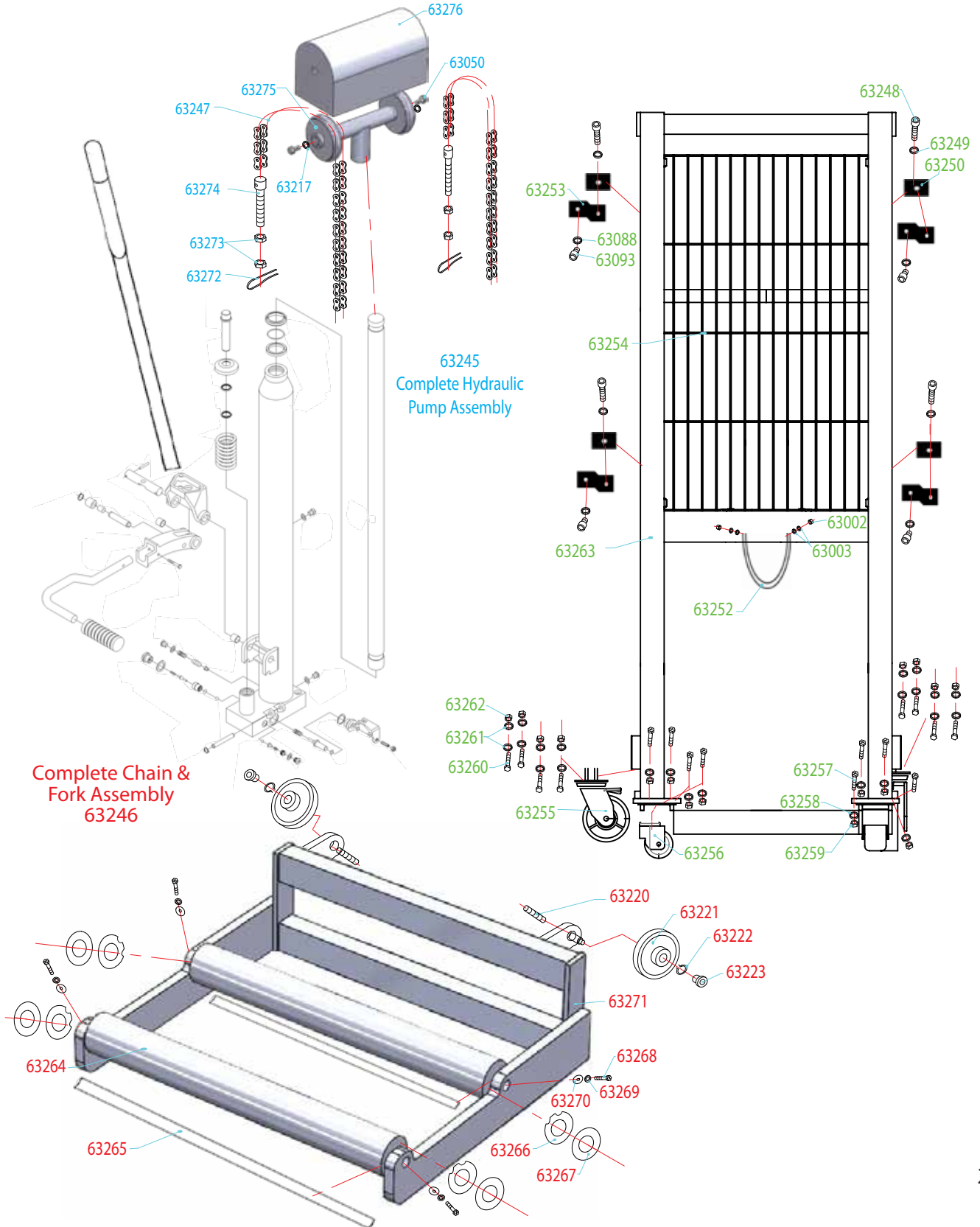
- 1.1 Contact Foster before replacing any components or performing any adjustments that aren't currently mentioned in this instruction manual.

Item #	Description	Item #	Description
63002	"U" bolt nut	62357	Front Caster Wheel Mounting Bolt
63003	"U" bolt washer	62358	Front Caster Wheel Mounting Washer
63050	Hydraulic pump chain guard screw	62359	Front Caster Wheel Mounting Nut
63088	Allen key bolt washer	63260	Rear Caster Wheel Mounting Bolt
63093	M6 x 12mm Bolt	63261	Rear Caster Wheel Mounting Washer
63217	Hydraulic pump chain guard washer	63262	Rear Caster Wheel Mounting Nut
63220	Roller Bearing Thread Screw for Jumbo	63263	Spinner Frame
63221	Roller Bearing for Jumbo	63264	Spinner
63222	Snap Ring	63265	Axle for Spinner
63223	Nylon Cap	63266	Cut Washer for Spinner
63245	Hydraulic Pump Assembly	63267	Washer for Spinner
63246	Spinner Chain & Fork Assembly	63268	Spinner Mounting Bolt
63247	Spinner Chain Assembly-connected	63269	Spinner Mounting Washer
63248	Wire Shield Protector Bolt	63270	Spinner Mounting Nut
63249	Wire Shield Protector Washer	63271	Fork Frame- Spinner
63250	Wire Shield Protector Bracket	63272	Hydraulic pump chain cotter pin
63252	"U" Bolt	63273	Support/caster frame nut
63253	Wire Shield Protector Attachment	63274	Hydraulic pump chain bolt
63254	Wire Shield Protector	63275	Hydraulic Pump Double Chain Wheel
63255	Rear Caster Wheel Assembly	63276	Chain wheel cover
63256	Front Caster Wheel Assembly		

# Parts Diagram

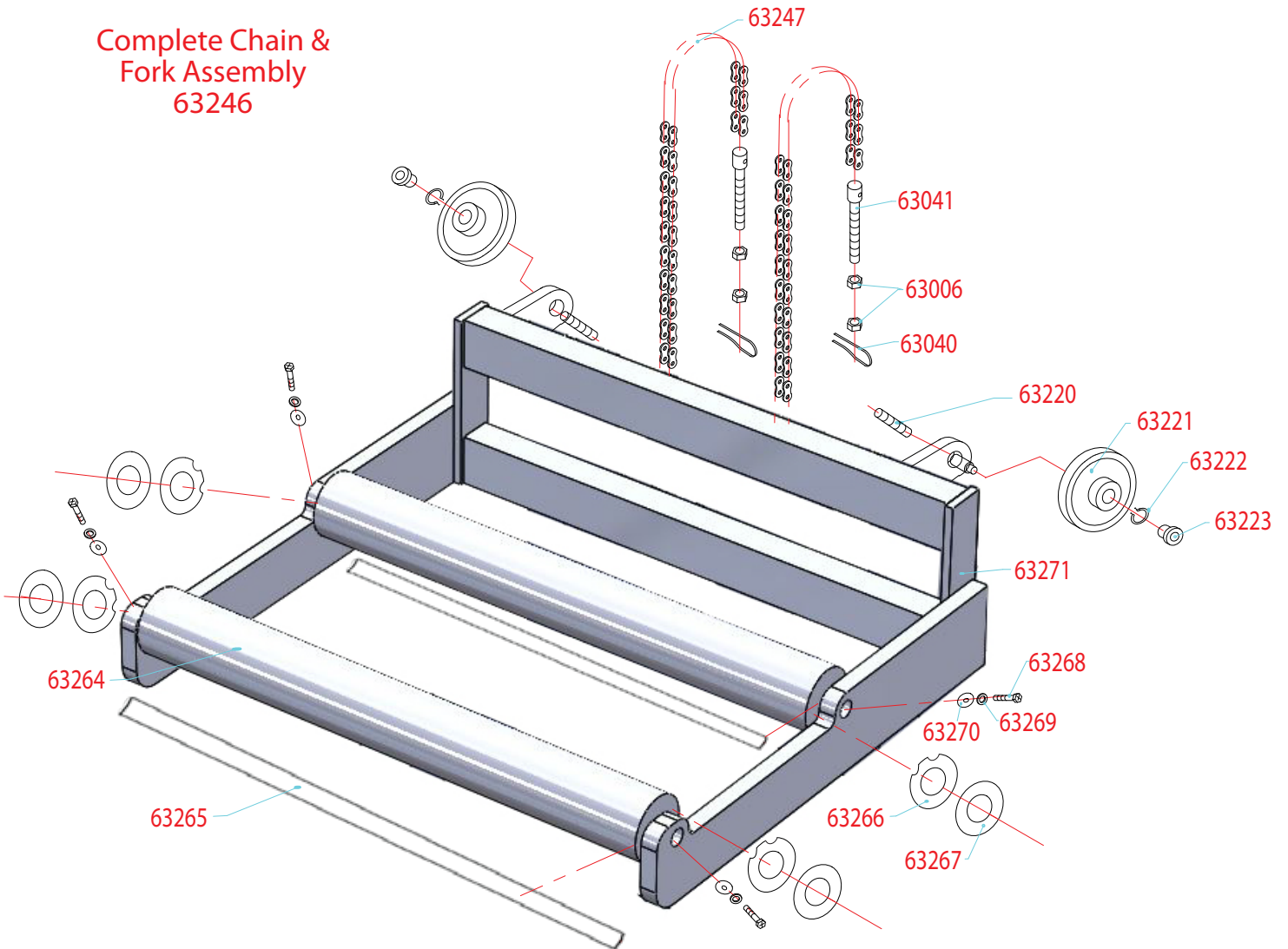
## 1 Parts diagram and list of components

1.1 Contact Foster before replacing any components or performing any adjustments that aren't currently mentioned in this instruction manual.



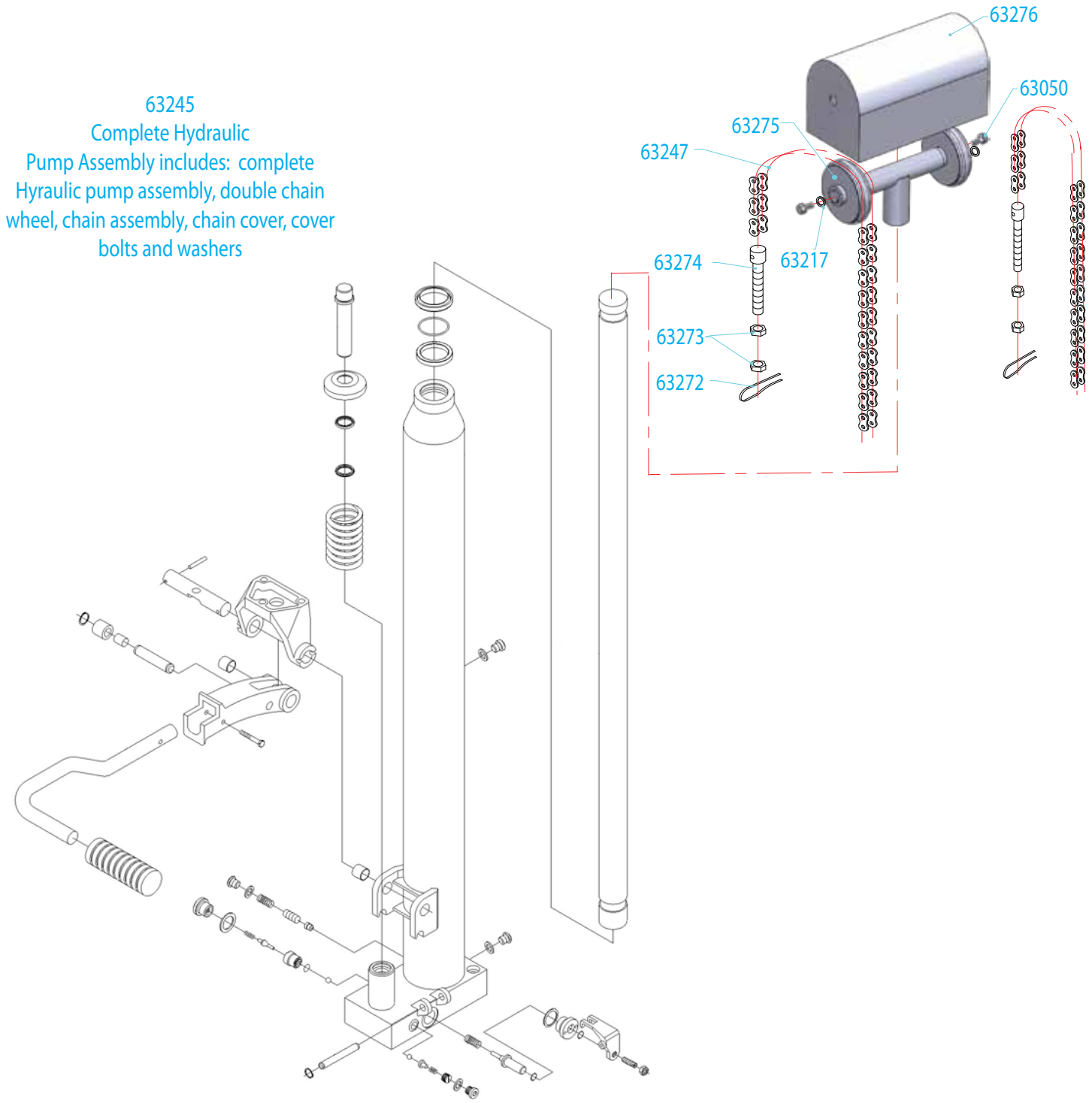
# Parts Diagram

## 1.2 Parts diagram: Chain & Fork Assembly



# Parts Diagram

## 1.3 Parts diagram: Hydraulic Pump Assembly

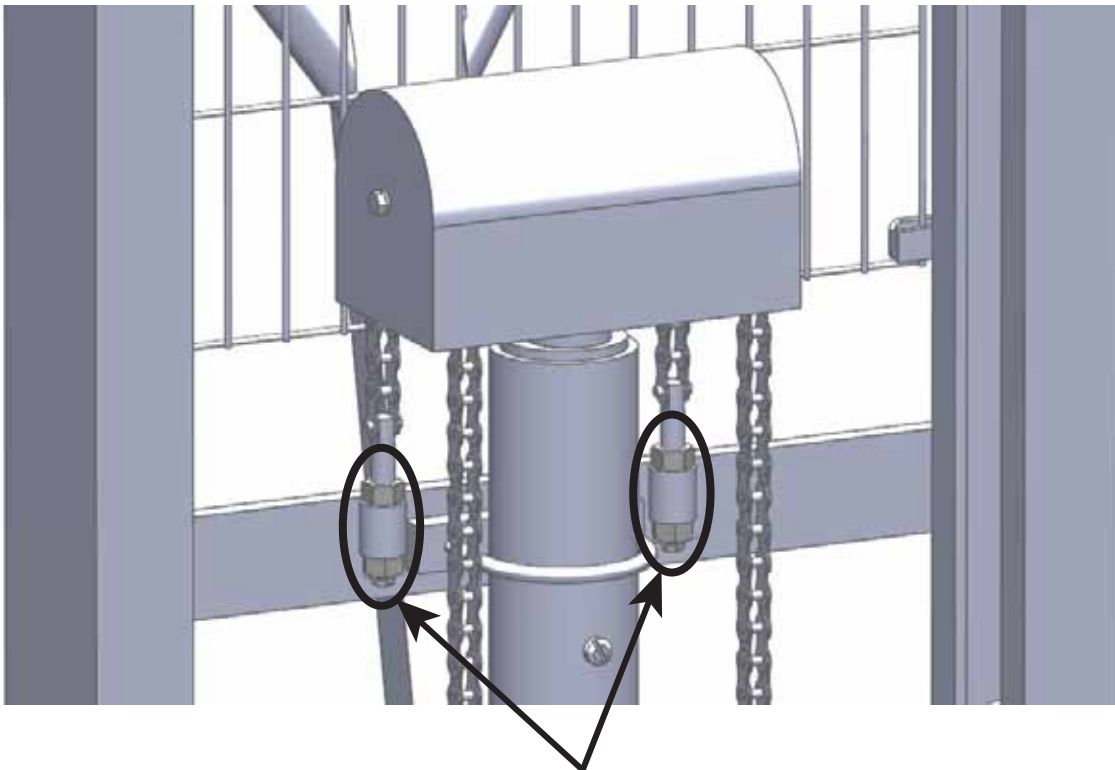


## 2. On-A-Roll Lifter® Wheels Not Turning Properly

1. Lift the front side to ensure the front wheels are intact and turning. Replace if damaged.
2. Lift the back side to ensure the steering wheels are intact and turning. Replace if damaged.
3. Ensure the cross bar is straight and not bowed. If the cross bar is bowed, the likely cause is that the user has dropped the roll media onto the tray or the roll weight is in excess of the recommended weight. Replace if damaged.

## 3. Oil Leaking

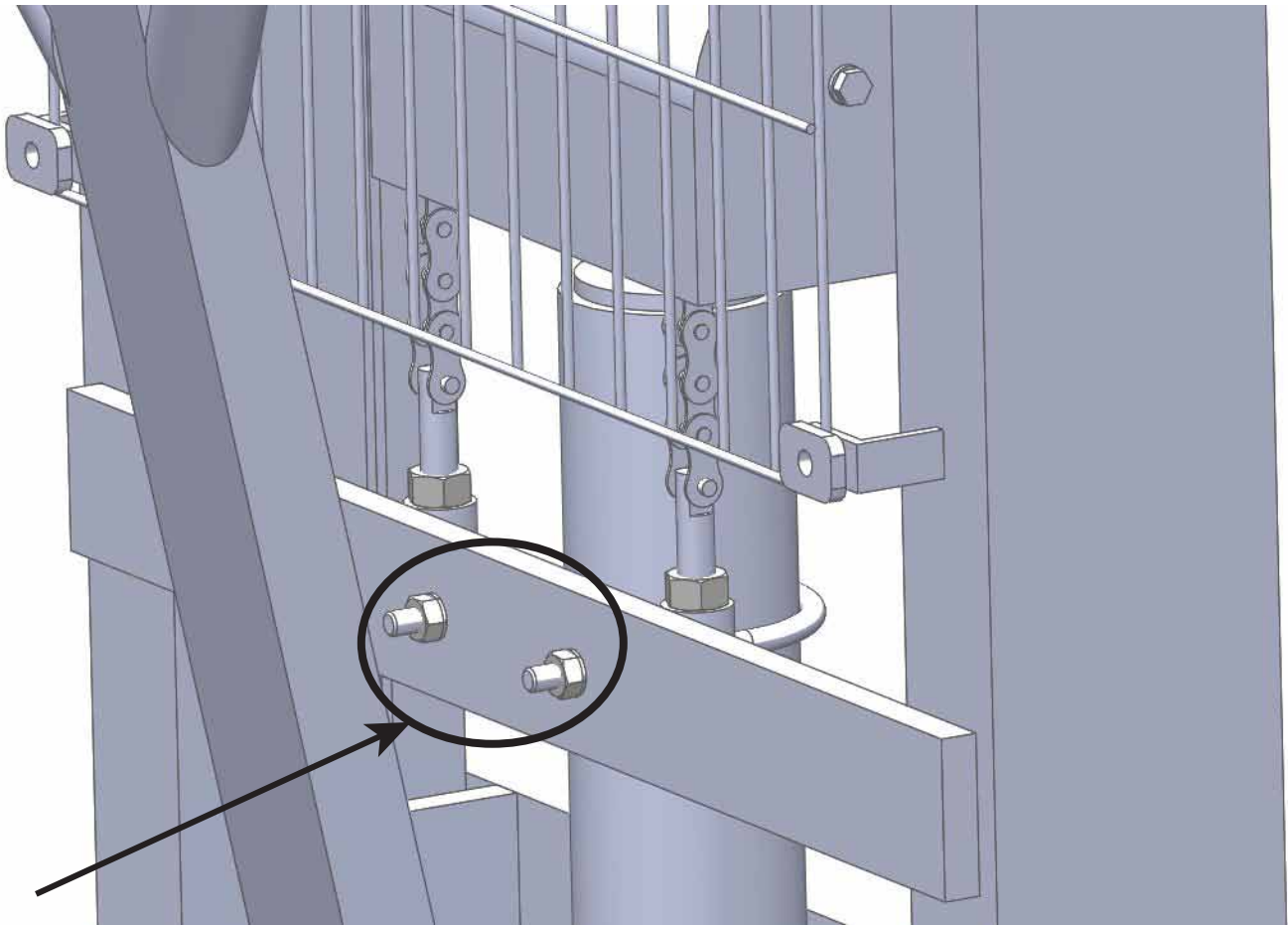
1. Remove the 2 nuts attached to the chain.





### 3. Oil Leaking

2. Remove 2 nuts from the U bolt.



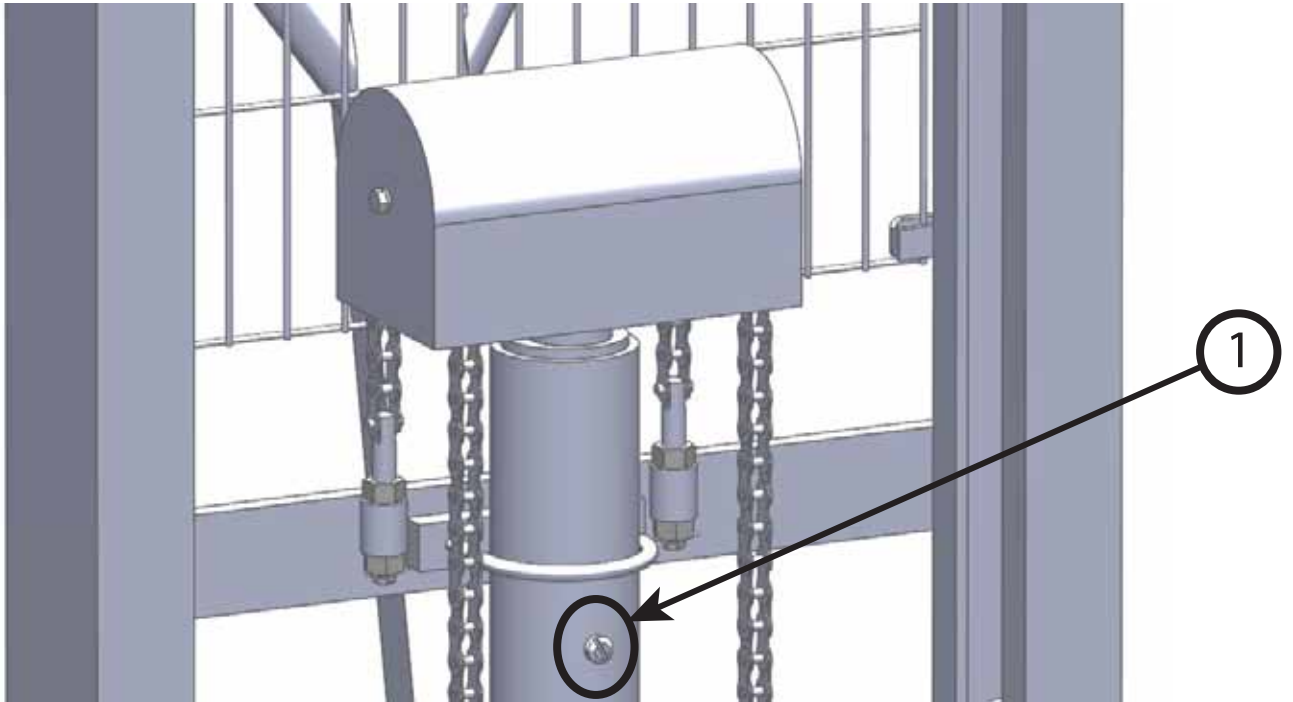
3. Lift the hydraulic pump.
4. Pack it properly into thick packaging material to avoid the oil spilling.
5. Replace with new hydraulic pump.
6. Tighten 2 nuts from the U bolt and reattach the 2 nuts to the chain.



## 4. Roll Not Lifting

Check for leaking.

1. Open the oil filling screw:
2. Fill the pump unit with 10-20 ml hydraulic oil, type L-HL68 (equivalent to ISO VG68). If room temperature is between  $-15^{\circ}\text{C}$  to  $-5^{\circ}\text{C}$ , use L-HL46 hydraulic oil (equivalent to ISO VG68).
3. Wait for few minutes for the oil to reach the bottom of the pump unit. Try to lift.
4. If still not lifting, add additional oil in 2 more steps until the tray begins to lift.



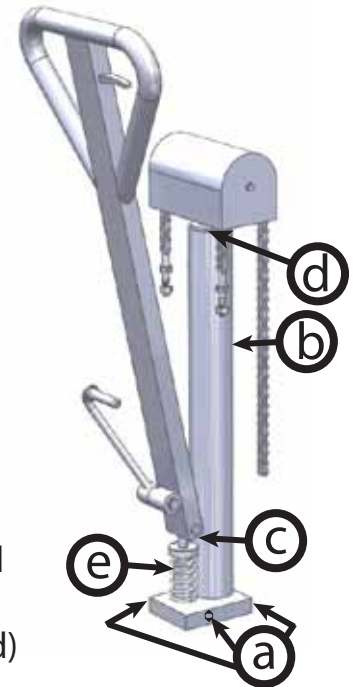
## 5. Tray Sinks Down Slowly

1. Replace the hydraulic pump as instructed in Instruction 3 "Oil Leaking".
2. Fill with more oil as instructed in Instruction 4 "Roll Not Lifting".
3. If still sinking, replace the seal of the lowering valve. See Instruction 6 "Oil Leaking at Release Valve".

## 6. Inspecting Hydraulic Cylinder for Leaks

Regularly changing your hydraulic fluid is the best way to prevent hydraulic pump leaks.

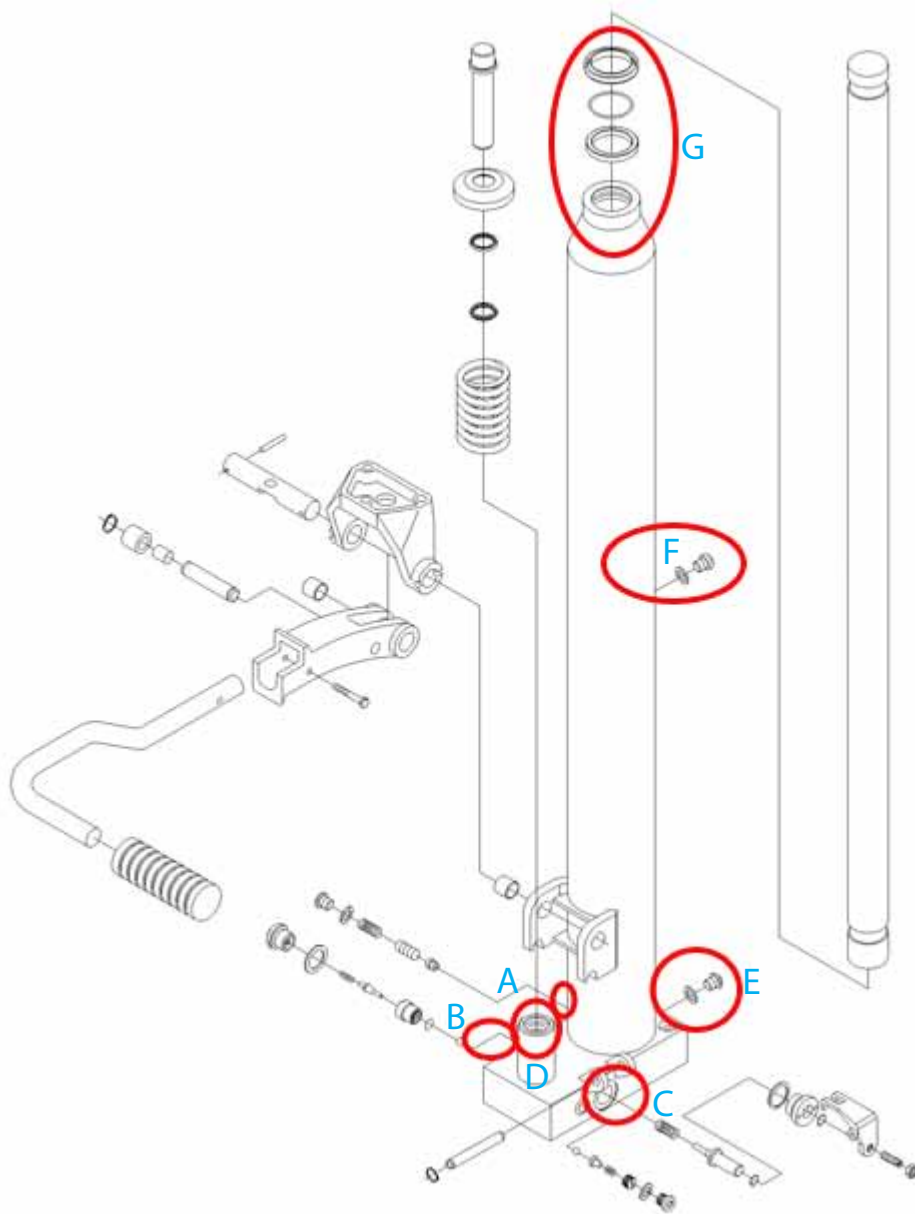
1. Wipe clean any excess oil that has accumulated on the cylinder or carriage, with attention to the areas around the fill/drain plugs and pressure seals circled in the diagram. This will help identify any future leaks (if they occur). Also make sure the underside of the cylinder/carriage has been wiped clean, any residual oil may still drip.
2. Inspect the Drain plugs (a) and ensure they are tight. Do not over tighten.
3. Inspect the oil fill plug (b) and ensure it is tight. Do not over tighten.
4. If excessive fluid has been lost (tray does not raise) see Step 4 "Roll Not Lifting". Otherwise, continue to Instruction 6 "Oil Leaking at Release Valve":
  - a. Fill the pump unit with 10-20 ml hydraulic oil (Less is better), L-HM46 Hydraulic oil (equivalent to ISO VG46).
  - b. Wait for few minutes for the oil to reach the bottom of the pump unit. Try to lift.
  - c. If still not lifting, add additional oil in 2 more steps until the tray begins to lift.
5. Cycle the On-A-Roll Lifter® up and down several times (loaded) and observe the following areas for leaks:
  - a. Drain plug leaks (a) should be visible as the fluid drips below their respective ports.
  - b. The next potential leak area is the release valve (c). Leaking fluid will cascade down the valves pedestal, and down to other components.
  - c. The oil fill plug is next (b), and a leak would show a fairly visible streak of oil coming downward from the plug.
  - d. Lastly, if the hydraulic ram (d) is leaking, oil would appear above the oil fill plug and cascade downward. However, at this point, it is suspected that the lifter would not hold the media tray in place.
  - e. Check the pump (e). A leak here is often difficult to find due to the spring obstructing the seal area, making pre-cleaning and inspection difficult.
6. If you should find any leak that was not corrected by tightening the fill/drain plugs, please contact Foster (1-800-523-4855) for advanced support.



**Note:** If fluid has been added or the unit has been overfilled, it is possible that excess fluid may leak from the fill plug, when the lifter is in operation. The fill plug may continue to leak until the excess fluid is gone. This isn't a problem and the machine will still function normally.

## 7. On-A-Roll Lifter<sup>®</sup> Lift Pump Repair

1. There are 7 points marked A, B, C, D, E, F, G in the next illustration. Identify the point of leakage and follow instructions.



Foster reserves the right to change designs, specifications and parts without notice.

## 7. On-A-Roll Lifter® Lift Pump Repair

### Point A

1. Unscrew the bolt.
2. Remove the seal ring, spring, valve and valve pad.
3. Inspect the parts if they are broken or worn out.
4. Replace the appropriate parts or all the parts and insert the parts as shown in the previous diagram.

### Point B

1. Unscrew the bolt.
2. Remove seal ring, spring, valve pin, valve, oil seal and steel ball.
3. Inspect the parts if they are broken or worn out.
4. Replace with all new parts and insert the parts as shown in the previous diagram.

### Point C

1. Unscrew the nut.
2. Remove the bolt, lever plate, oil seal, pin, seal ring and spring.
3. Replace with all new parts and insert the parts as shown in the above diagram.

### Point D

1. If spring and release valve are leaking, replace the Hydraulic Pump. See Step 8.

### Point E

1. Unscrew the bolt.
2. Remove the seal ring.
3. Inspect the parts if they are broken or worn out.
4. Replace the appropriate parts or all the parts and insert the parts as shown in the previous diagram.

### Point F

1. Unscrew the bolt.
2. Remove the seal ring.
3. Inspect the parts if they are broken or worn out.
4. Replace the appropriate parts or all the parts and insert the parts as shown in the previous diagram.

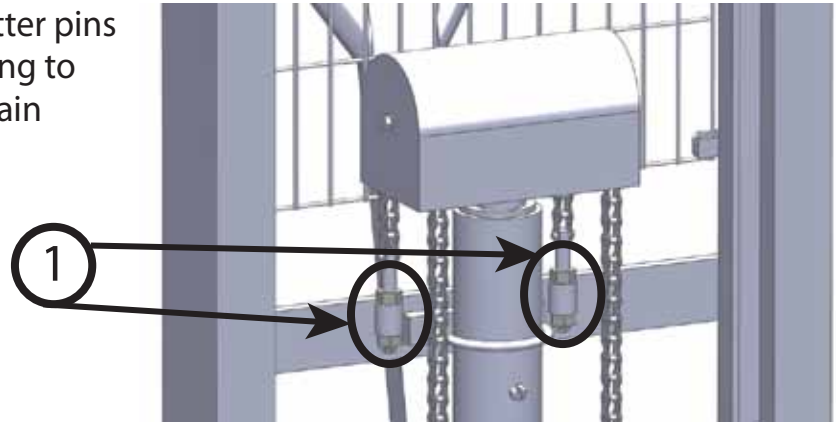
**Note:** If Oil is leaking at other points or parts cannot be replaced, see step 8 on replacing the Hydraulic Pump.

## 8. Hydraulic Pump Replacement

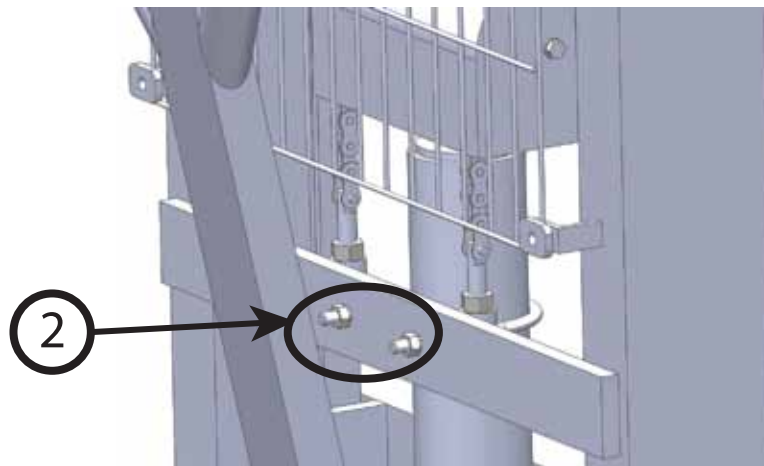
If any of the connection points are loose in Step 6, tighten them to prevent leaking. If any connection point is damaged, those parts will need to be replaced. If connections appear fine or parts cannot be replaced then the Hydraulic Pump will need to be replaced.

### Hydraulic Pump Replacement

1. Remove the nuts and cotter pins from both chains attaching to the top section of the chain assembly.



2. Remove 2 washers and nuts from the U bolt.



3. Lift the hydraulic pump.
4. Pack it properly into thick packaging material to avoid the oil spilling.
5. Replace with new hydraulic pump.
6. Tighten 2 washer and nuts from the U bolt.
7. Reattach the nuts and cotter pins to each chain.